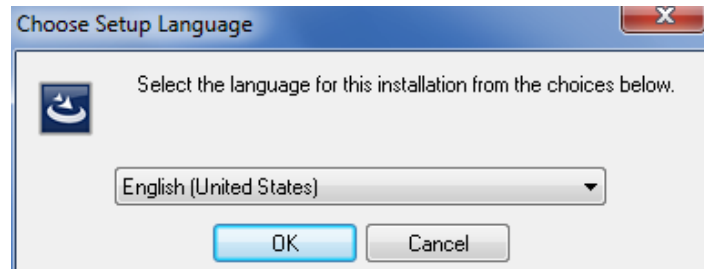


## Installation of MoLab View

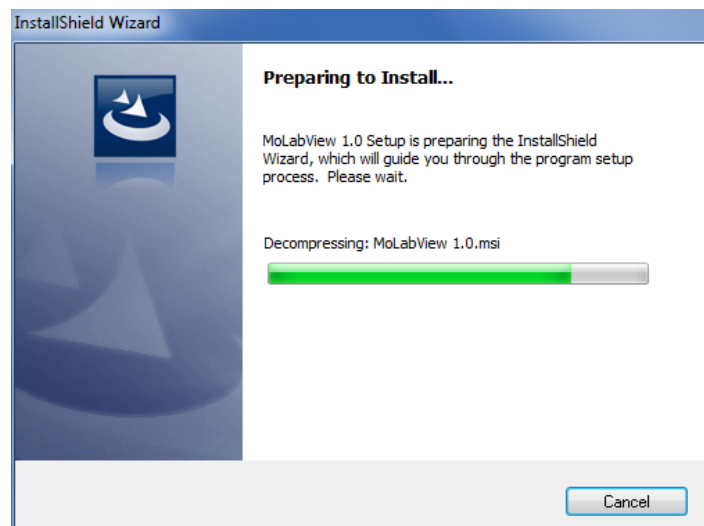
MoLab View is the CMA Utility program to project the MoLab screen image on the computer screen. At the CMA website there are two installation files available, MoLabView\_1\_0.exe for 32-bits Windows and MoLabView\_1\_0\_x64.exe for 64-bits Windows.

- Download the latest MoLab View installation file via the CMA website.
- Double-click the downloaded file.
- The MoLab View Installer starts.

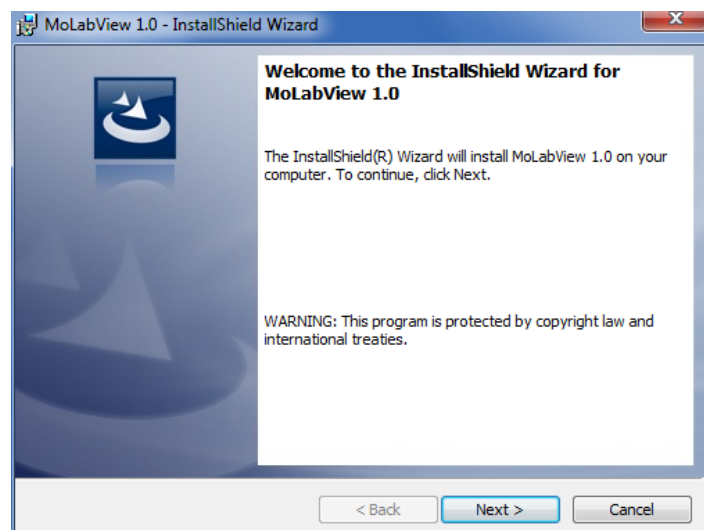
- Select the language for MoLab View and click **OK**.



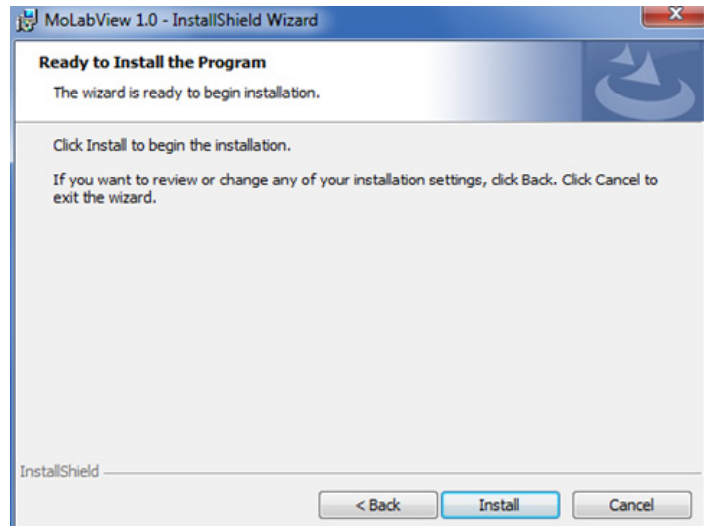
- The installer prepares your computer for installation.



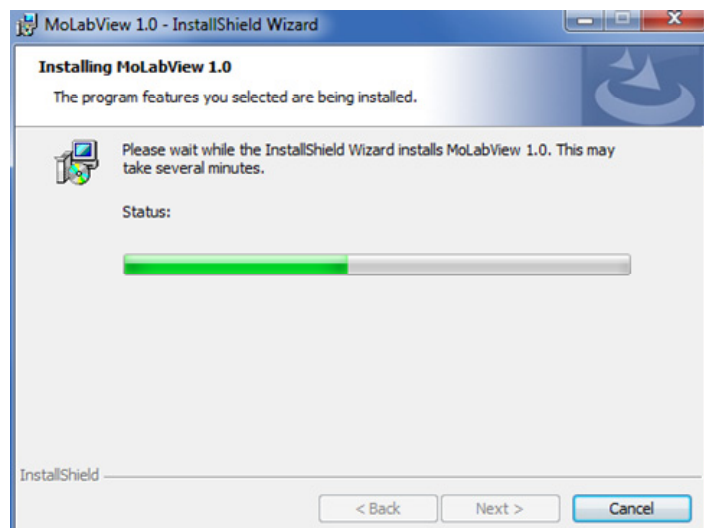
- Click **Continue** in the **Welcome** dialog.



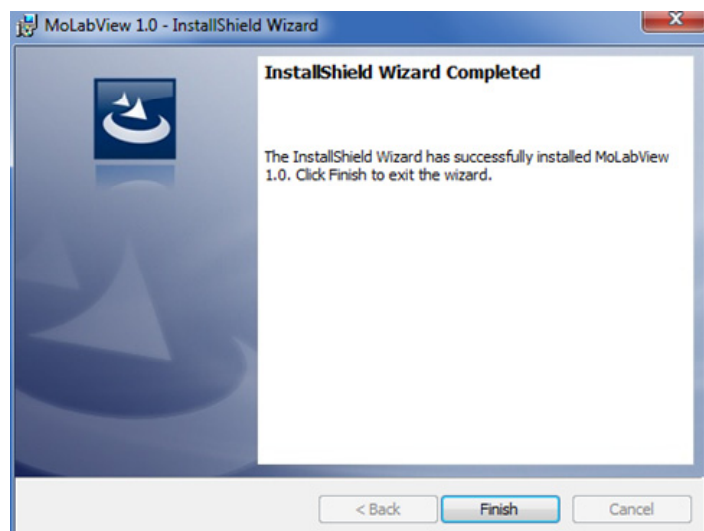
- Click **Install** in the **Ready to Install the Program** window.



- The process of installation starts.



- Click **Finish** to complete installation.
- The MoLab View icon is added to the group **CMA Utilities**.



CENTRE FOR MICROCOMPUTER APPLICATIONS

<http://www.cma-science.nl>